

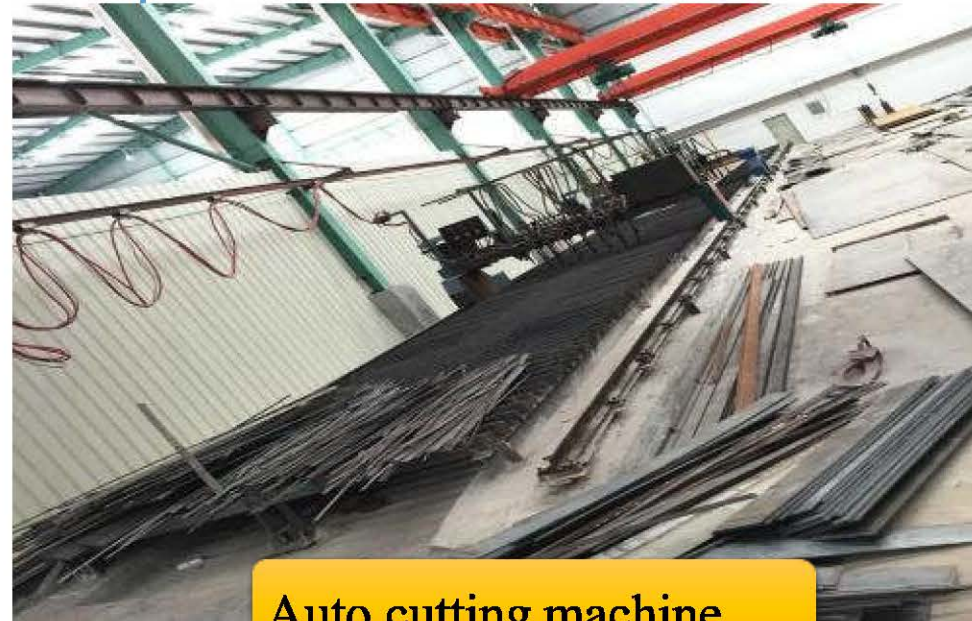
Container House



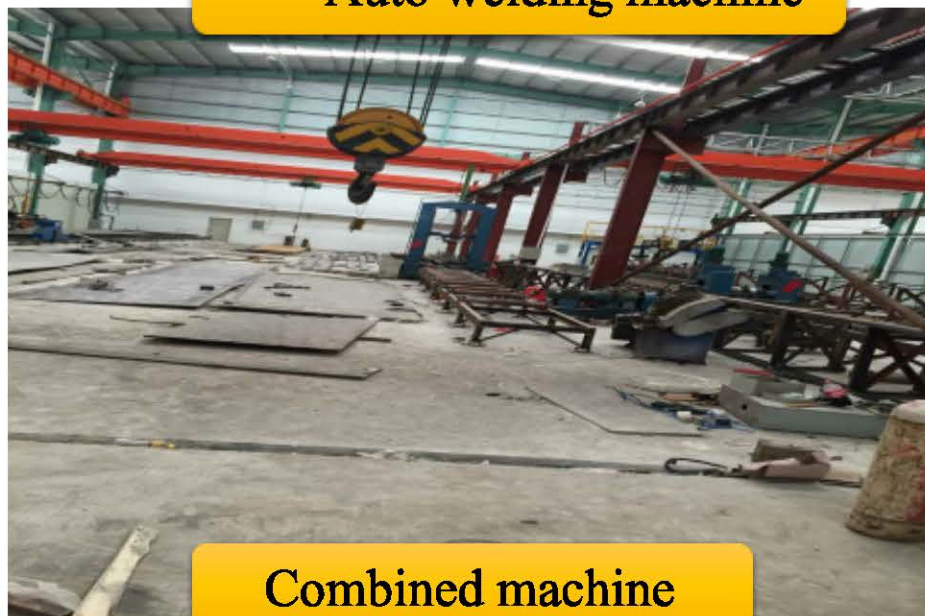
Factory Information



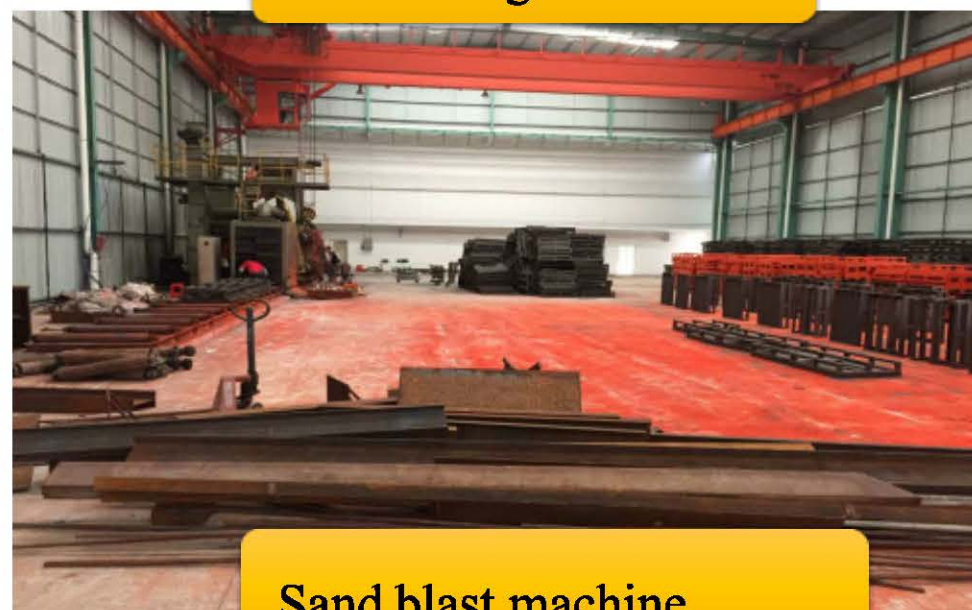
Auto welding machine



Auto cutting machine



Combined machine



Sand blast machine

Factory Information

Production Machines



Steel plate machine



Sandwich panel machine



Factory technician



Warehouse

Product Introduce



Bulk/flat pack Container house



Expandable container house



Folding container house



Villa container house

Container house

Container house structure is simple easy to install.It is one construction product which mobile and widely used for real estate development company exhibition hall,product sale showroom,temporary reception center,commercial temporary



Container house

- It's apply extensively as the temporary buildings in field for road, railway, construction projects and the temporary buildings for urban municipal projects, commerce and other projects, such as: office, meeting room, headquarters, dormitory and shop, school, temporary hospital.



Container house

Performance

1. Removable and repeated use;
2. Short finish time, without foundation;
3. Anty-typhone, anty-earthquake;
4. Economic and high quality, can be stacked for 2 floors.

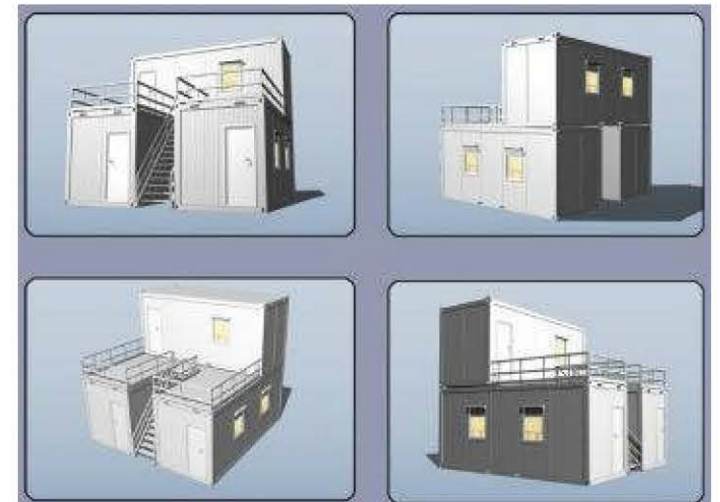


*Container house
indoor layout*



Container house

→ **More Storey Container**



Container house

→ **Typical Product**



Container house

→ **Typical Product**



Flat Pack Container

→ Installation details

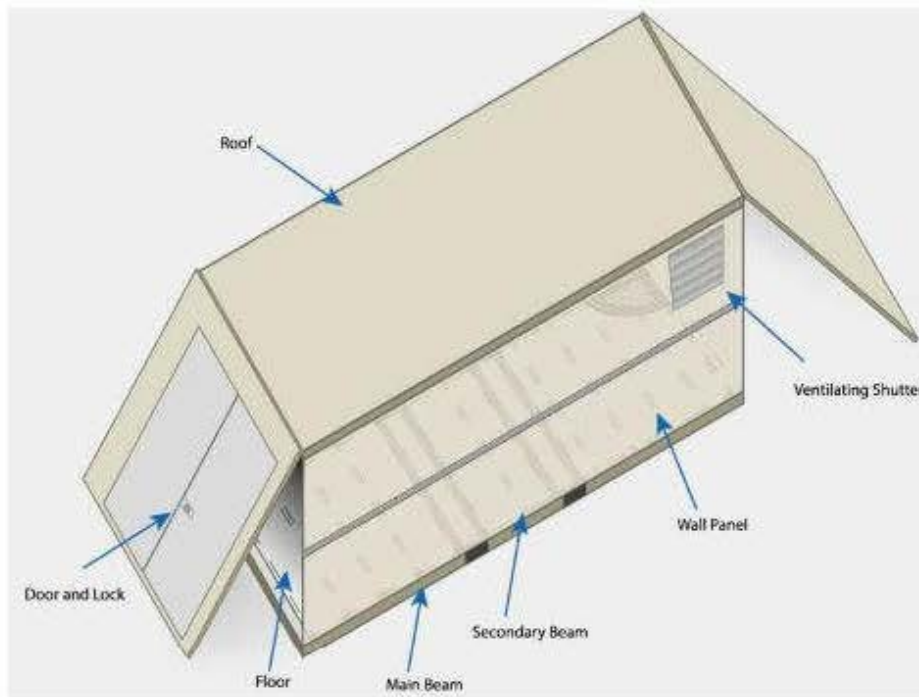


Flat Pack Container

→ Main material

Material list			
No.	Component	Material	Refer photo
1	Chassis	C Chanel Steel	
	Purlin	10 # C Steel	
	Flooring	15mm Cement Board	
2	Wall Panel	50mm EPS Sandwich Panel	
3	Corner Column	3.0mm Cold Form Steel	
4	Roof Structure	3.0mm Cold Form Steel	
5	Roof Panel	75mm EPS Sandwich Panel	
6	Door Panel	Steel Security Door	
7	Window	PVC Window	
8	Accessories	Nuts、 Tapping Screw、 Rivet、 Sealant Ect.	

Folding container house



Folding container house



Folding container house



Interior design



Folding container house

Installation

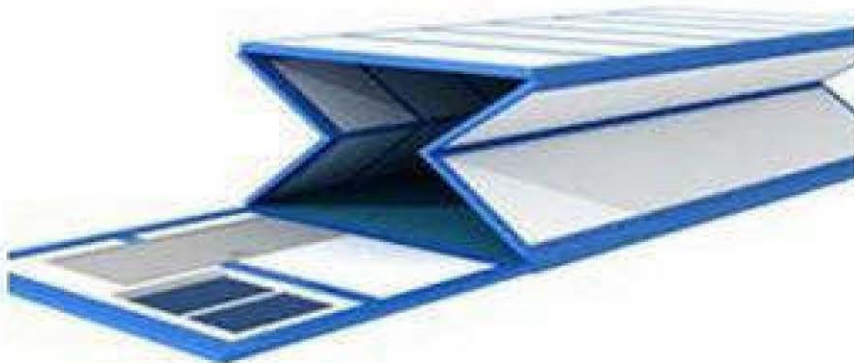
1



2



3



4



Folding container house

→ Main material

No.	Component	Material	Photo
1	Chassis	3.0 mm Cold form steel	
		8# C steel purlin	
		15 mm Cement board	
2	Wall panel	50 mm EPS sandwich panel	
	Side wall beam	2 mm Cold form steel	
3	Roof beam	2 mm Cold form steel	
		50 mm EPS sandwich panel	
4	Window	PVC Sliding window	
5	Door	Steel security door	
6	Accessory	Gal.tapping screw, rivet, bolt&sealant	

Container house -Project Case



Container house

Project Case

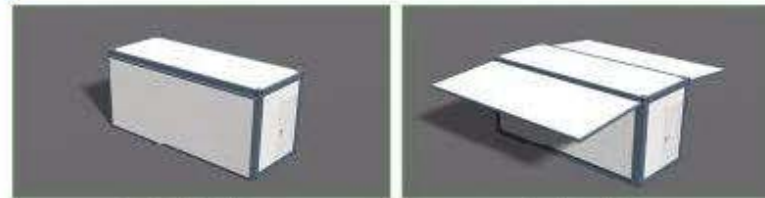


Container house

→ Project Case



Expandable container house



Flat Pack Packing

Roof Installation



Floor Installation

Wall Installation

Expandable House Finished

